

NEXT GENERATION POWER AMPLIFIERS

Power Amplifier Systems

500 W / 3U chassis

SKU 2173	Model BBS2E3KRR	20 – 500 MHz	500 W
SKU 2174	Model BBS3K4ARR	500 – 1000 MHz	500 W
SKU 2175	Model BBS2E4ARR	80 – 1000 MHz	500 W

500 W, P3dB minimum

guaranteed over full bandwidth and temperature

Compact Size, 3U chassis



- ⊕ LDMOS based, high performance 500 W PA
- ⊕ -10 to +50 C ambient temperature
- ⊕ Compact size, 3U chassis
- ⊕ Power output performance guaranteed over full bandwidth and temperature
- ⊕ Configurable, universal power supply
- ⊕ Touch screen interface. Built in test, remote diagnostics

Optimized for key markets

Test & Measurement



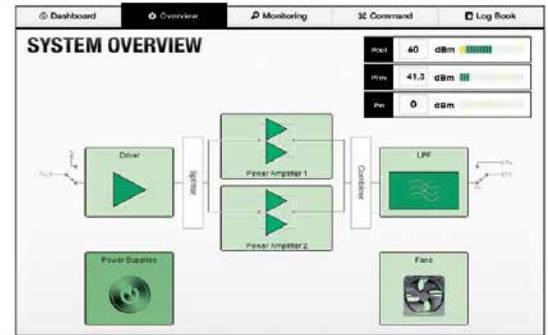
Electronic Attack



Digital Communications



User Interface
Touchscreen and remote



- ⊕ Embedded web server
- ⊕ Uses standard web browser
- ⊕ Real time power amplifier diagnostics
- ⊕ Separate application is handling the RF monitoring and control
- ⊕ Ability to pull the HPA into a “network” of end user system components



EMPOWER
RF SYSTEMS, INC.

NEXT GENERATION POWER AMPLIFIERS

Power Amplifier Systems

500 W / 3U chassis

SKU 2173	Model BBS2E3KRR	20 – 500 MHz	500 W
SKU 2174	Model BBS3K4ARR	500 – 1000 MHz	500 W
SKU 2175	Model BBS2E4ARR	80 – 1000 MHz	500 W

500 W, P3dB minimum

guaranteed over full bandwidth and temperature

Compact Size, 3U chassis

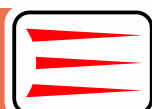
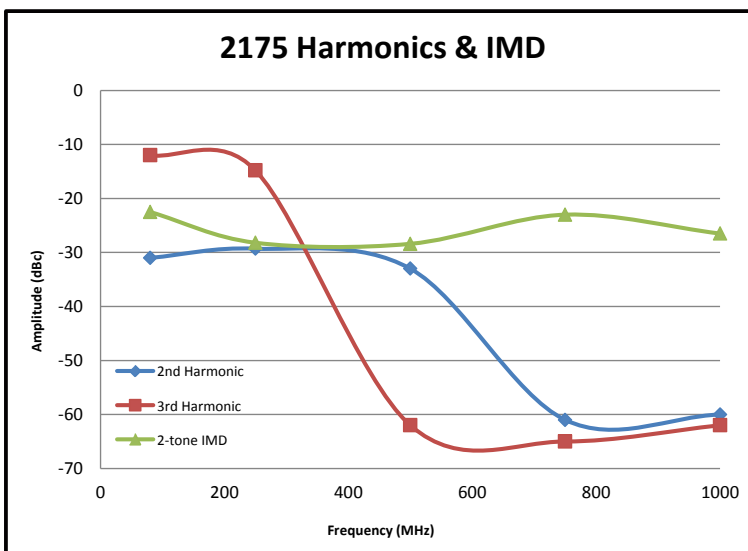
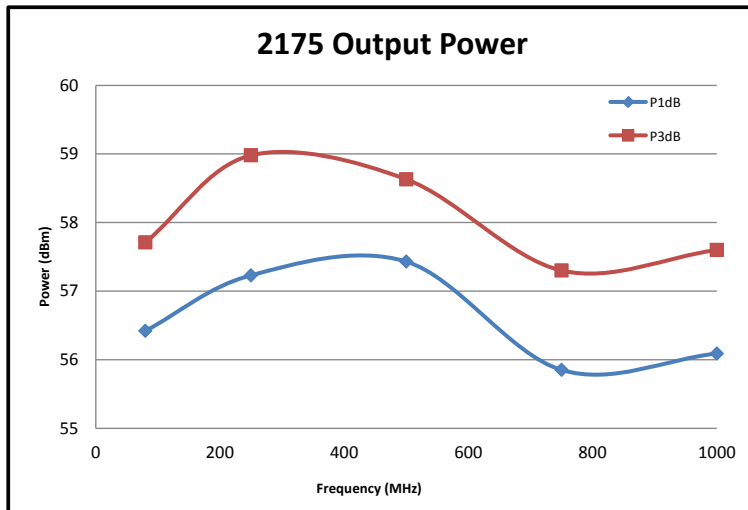
Frequently asked question:

Can switch / filter functionality be added to this PA?

The 500 W product line has been designed for easy integration of customer specific filter and switch combinations.

In some cases, the additional functionality can be integrated into the existing 3U chassis.

Specific switch filter requirements need to be reviewed by our technical team and the integrated solution presented (and quoted) to the customer, as applicable.



EMPOWER
RF SYSTEMS, INC.